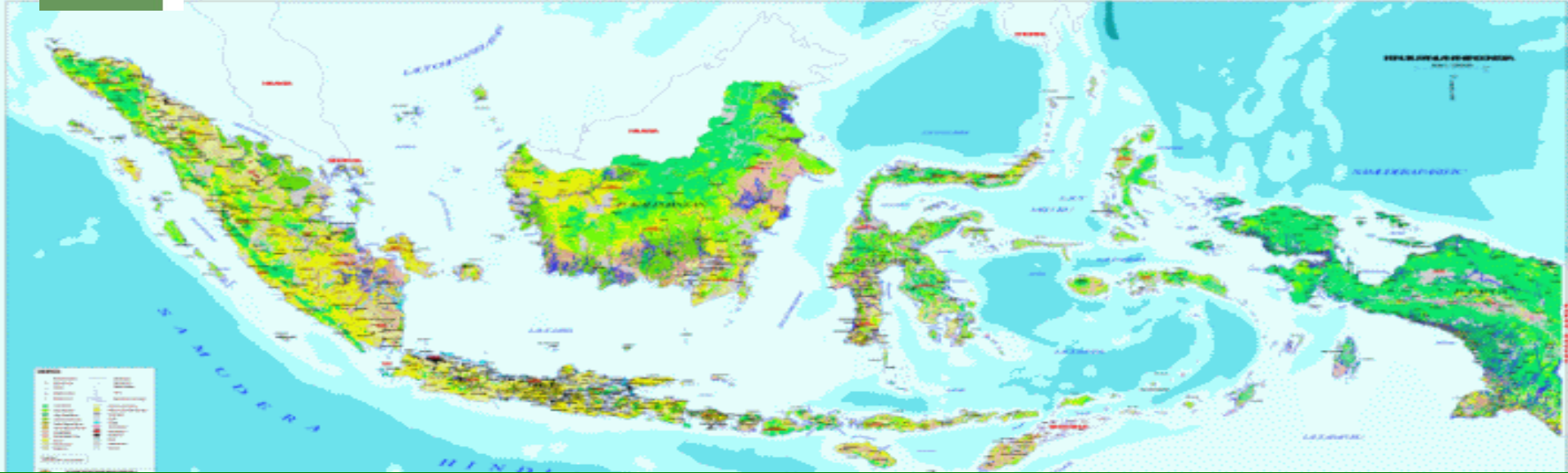




REDD+ READINESS SELF-ASSESSMENT FOR INDONESIA

FCPF – PA10/PC24 Meeting
Lao PDR, September 25-29, 2017



- a. Land area: ± 187 millions ha, population: > 260 millions
- b. Total island: > 16 thousand, > 300 tribes
- c. 5 regions, 34 provinces, > 400 districts, autonomous governance system
- d. State forest: $\pm 60\%$ of land area ($\pm 30\%$ degraded at various levels)
- e. Forest transition from:
 - Papua: low historical DD;
 - Sumatra, Kalimantan, Sulawesi: high historical DD;
 - Java: forest cover increases

REDD+ INDONESIA



OBJECTIVES:

Sustainable welfare while strengthening emission reduction commitments and increasing carbon stocks, and conserving and measuring the biodiversity and services of forest and peatland ecosystems.



Acceleration of forest area recognition

Protection and Recognition of local communities & MHA

Prevention and control of forest and land fires

Coordination of law enforcement through multi-door approach



One Map Movement



Legal Reform Road Map



Conflict Resolution in Conservation Areas



Completion of Licensing Permit

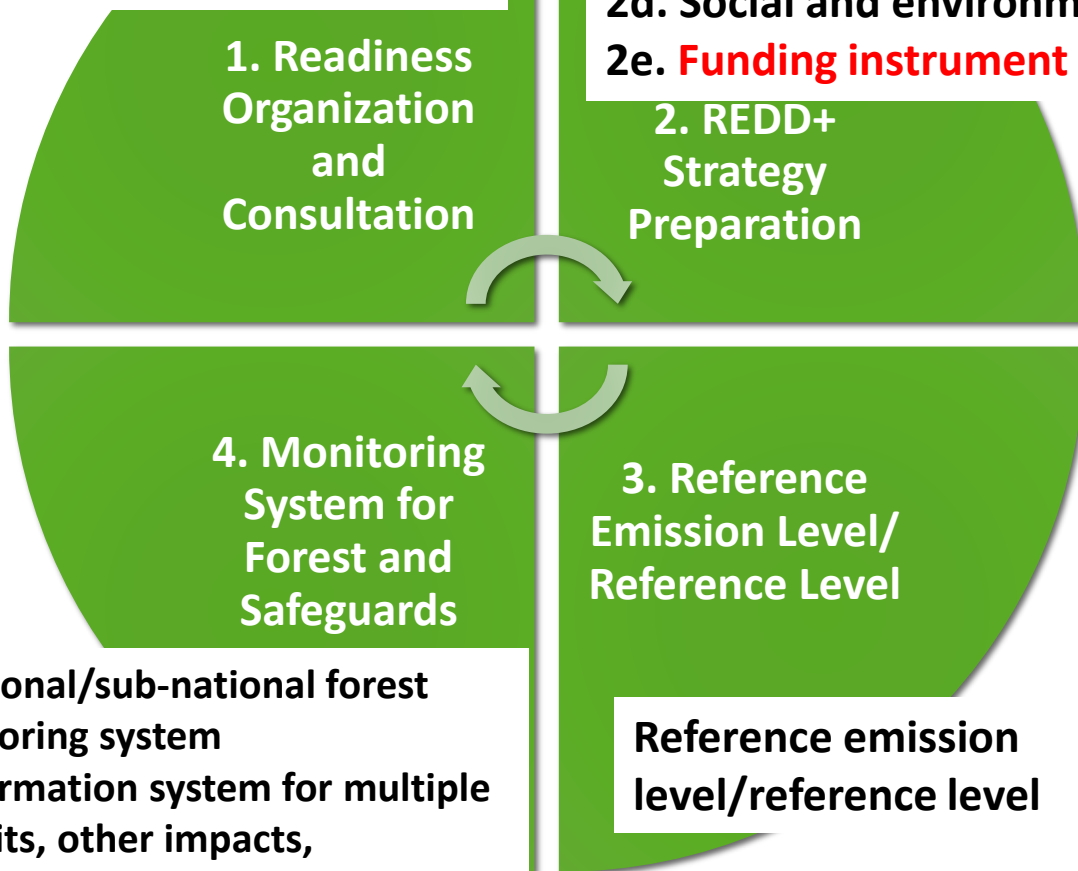




REDD+ Readiness (4 Components)

- 1a. National REDD+ management arrangement
- 1b. Consultation, participation and outreach

- 2a. Assessment of land use, land use change drivers, forest law, policy and governance
- 2b. REDD+ strategy options
- 2c. Implementation framework
- 2d. Social and environmental impacts
- 2e. **Funding instrument and benefit sharing mechanism**

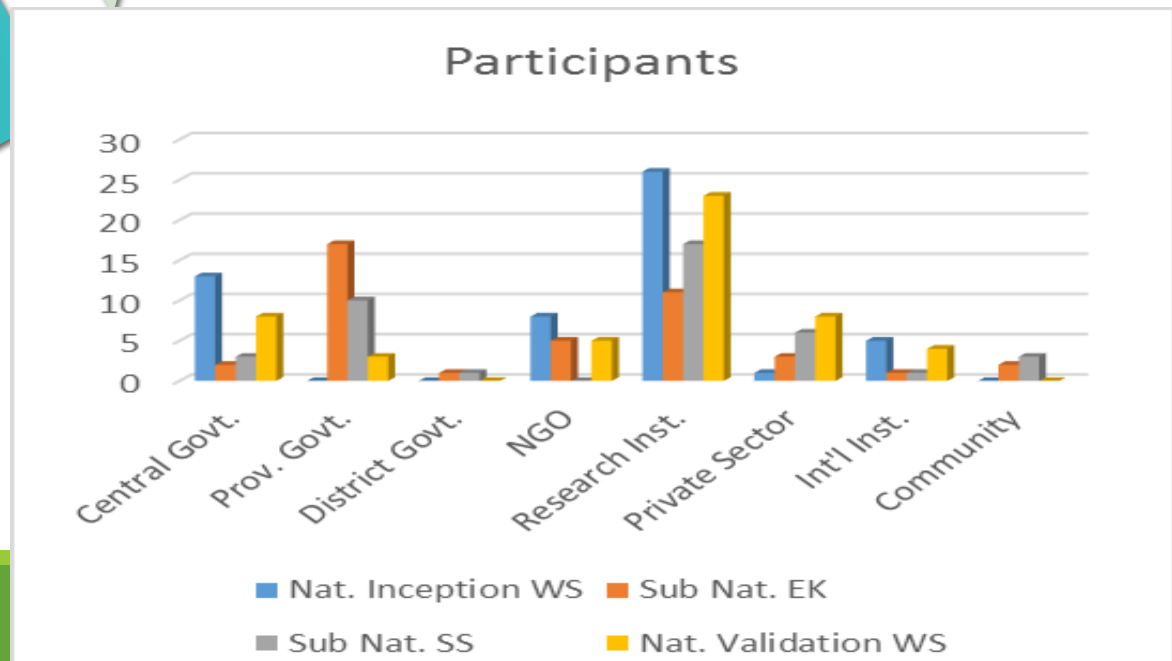
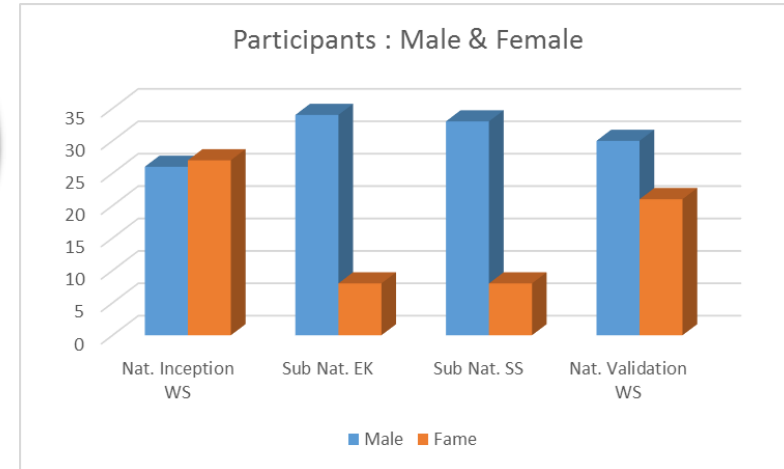
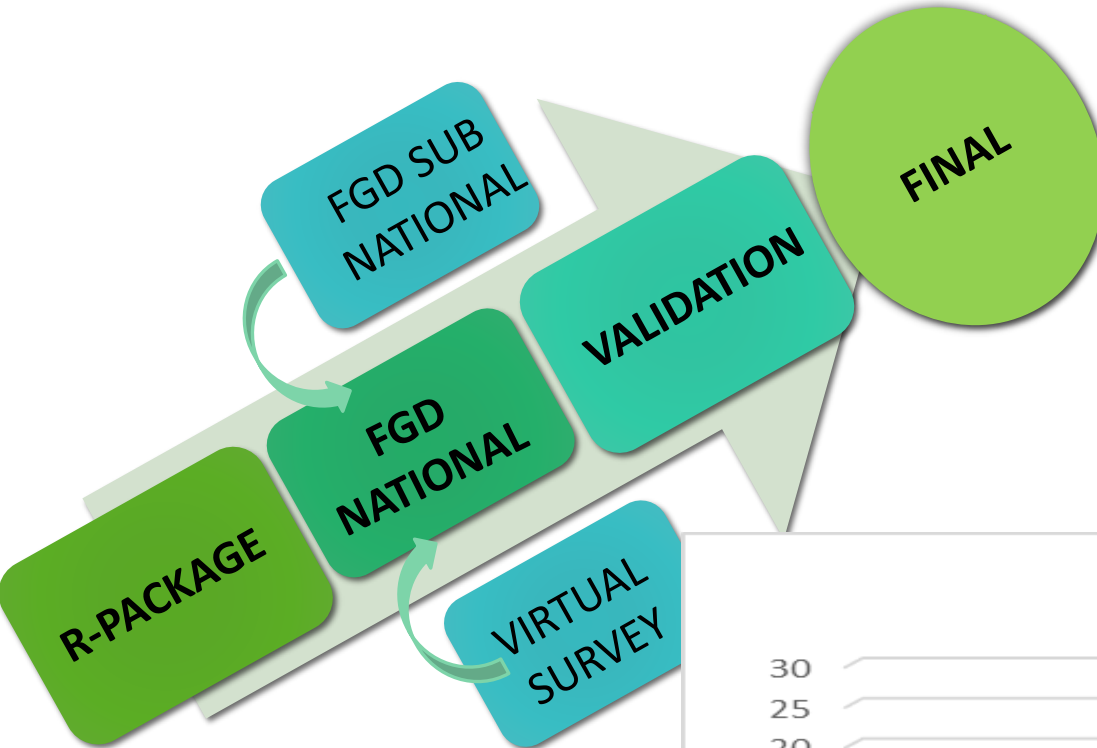


GREEN 'significant progress'	ORANGE 'further development required'
YELLOW 'progressing well, further development required'	RED 'not yet demonstrating progress'

- 4a. National/sub-national forest monitoring system
- 4b. Information system for multiple benefits, other impacts, governance, and safeguards

Reference emission level/reference level

SELF ASSESSMENT APPROACH & PARTICIPANTS



PROGRESS REDD+ SINCE MTR



REDD+ READINESS	MTR 2014	2016
Component 1: Readiness Organization and Consultation		
1.a. National REDD+ management arrangement		
1.b. Consultation, participation and outreach		
Component 2: REDD+ Strategy Preparation		
2.a. Assessment of land use, land use change drivers, forest law, policy and governance		
2.b. REDD+ strategy options		
2.c. Implementation framework		
2.d. Social and environmental impacts		
2.e. Funding instrument and benefit sharing mechanism		
Component 3: Reference Emission Level/Reference Level		
3.a. Reference emission level/reference level		
Component 4: Monitoring System for Forest and Safeguards		
4.a. National forest monitoring system		
4.b. Information system for multiple benefits, other impacts, governance, and safeguards		

Component 1: Readiness Organization and Consultation



1A. NATIONAL REDD+ MANAGEMENT ARRANGEMENT

- ❑ National level:
 - Since 2015, REDD+ related matters are managed under Directorate General Climate Change (DGCC), Ministry of Environment and Forestry
- ❑ Sub-national level:
 - Ad-Hoc institution in charge of REDD+ management and
 - Technical implementation unit of DGCC

1B. CONSULTATION, PARTICIPATION AND OUTREACH

- ❑ Indonesia has done sign. participation, engagement & consultation process (at national & sub-national levels-FREL, MRV, SIS)
- ❑ At present, what remains is a funding instrument for REDD+ (the domain of policy-making)
- ❑ Indonesia is analyzing the contribution of REDD+ to the NDC. This process will involve many parties.

COMPONENT 2: REDD+ Strategy Preparation



2A. ASSESSMENT OF LULUCF DRIVERS, FOREST LAW, POLICY & GOVERNANCE

- ❑ The most advance progress.
- ❑ Many studies on LULUCF drivers being used as inputs for policy reform towards better governance.
- ❑ Contribution of FCPF to analytical work, e.g.:
 - analysis of DD
 - identification of priority investments required to reduce DD;
 - identification of activities that result in reducing emission and increasing removals.
- ❑ Remaining challenges, among others:
 - Tenure rights
 - Data management system

2B. REDD+ STRATEGY OPTIONS

- ❑ The strategic framework for REDD+ has been developed (Natl REDD+ Strategy)
- ❑ 5 strategic pillars in REDD+ program framework:
 - Devt of an institutional system for REDD+
 - Polcies and regulations reviewed & strengthened
 - Strategic program (Conservation, Rehabilitation, Sustainable Agriculture and Mining, Sustainable Management of Landscapes)
 - Change of paradigm and mindset
 - Stakehoder participation

COMPONENT 2: REDD+ Strategy Preparation



2C. IMPLEMENTATION FRAMEWORK

- Some policies supporting REDD+:
 - The moratorium of new license in primary forest and peatland
 - One Map Policy
 - Ministerial regulation on REDD+ implementation (on going process)
- Forest Management Unit (FMU) as basis for implementation of REDD+ framework
- REDD+ National Registry: Ready to operational, but some steps are needed.
- Benefit Sharing Mechanism

2D. SOCIAL AND ENVIRONMENTAL IMPACTS

- Several safeguard instruments (e.g. PRISAI, REDD+ SES, SVLK, Amdal, KLHS, etc.) have been developed to address social and environmental impacts.
- SIS REDD Indonesia
- In 2016: a compilation of background information for the development of SESA Final Report and preparation of ESMF was initiated.
- East Kalimantan: prepare ESMF draft-0
- The procurement process is underway

COMPONENT 2: REDD+ Strategy Preparation



2E. FUNDING INSTRUMENT & BENEFIT SHARING MECHANISM

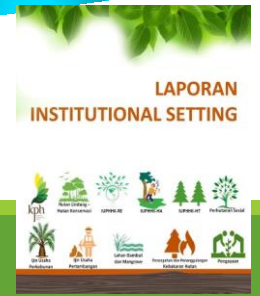
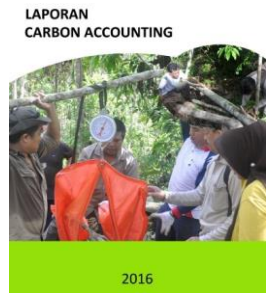
- ❑ Current progress on REDD+ funding preparation through establishment of General Services Agency (BLU).
- ❑ BSM as part of work modality of BLU is being prepared and will be arranged under the General Services Agency .
- ❑ Strategic Plan in funding mitigation and adaptation program:
 - National Budget System (APBN)
 - National: local and national partners, national and multinational companies.
 - Bilateral: Norway, EU, Denmark, UK, Australia, South Korea, Mexico, USA, Holland, Germany, Swiss, Sweden, Japan.
 - Multilateral: UNFCCC, UNEP, UNDP, Multilateral Development Bank, FAO, GEF, GCF, **FCPF**, and other Multilateral Funds.

COMPONENT 2: REDD+ Strategy Preparation



FCPF

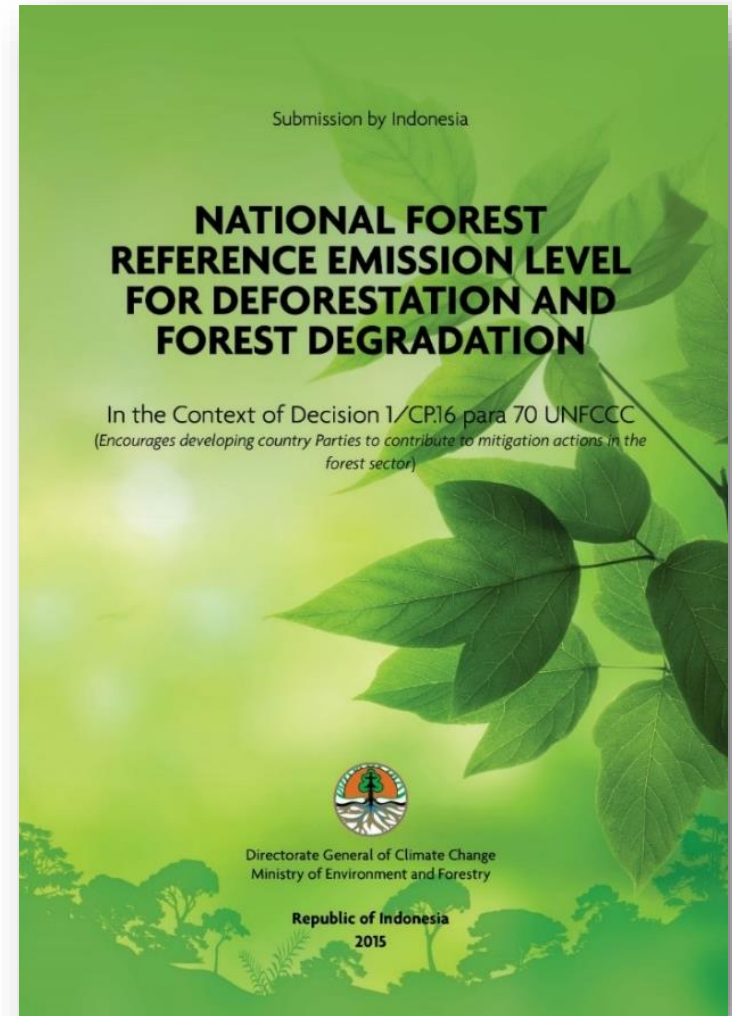
- Finalization of ER-PIN
- Conduct various studies to support the preparation of ER-PD
- Mainstreaming FCPF Carbon Fund in East Kalimantan Province
- Develop PSP (159 plots in East Kalimantan Province)
- Compilation of information for SESA preparation for the development of SESA Final Report and preparation of ESMF
- Initial preparation of BioCarbon Fund ISFL
- Facilitate discussion to review the existing regulations related to REDD+



Component 3: Reference Emission Level/ Reference Level



- ❑ The national FREL was submitted to UNFCCC in the COP 21 Paris (2015).
- ❑ Technical assessment by UNFCCC expert has been conducted in 2016.
- ❑ FREL from deforestation forest degradation: $0.351 \text{ GtCO}_2\text{e yr}^{-1}$; peat decomposition: $0.217 \text{ GtCO}_2\text{e yr}^{-1}$; Total: $0.568 \text{ GtCO}_2\text{e yr}^{-1}$



4. Monitoring System for Forest and Safeguards



4A. NATIONAL FOREST MONITORING SYSTEM



Source: <http://nfms.dephut.go.id/ipsdh/>

- ❑ Indonesia's NFMS is available and operational
- ❑ The NFI has laid the foundation for the establishment of the system to monitor forest resources



- ❑ web-based Forest Carbon Database. www.puspajak.org/karbon/ (FCPF fund)

Component 4. Monitoring System for Forest and Safeguards



4B. INFORMATION SYSTEM FOR MULTIPLE BENEFITS, OTHER IMPACTS, GOVERNANCE, AND SAFEGUARDS

Relevant non-carbon aspect as well as social and environmental issues have been addressed in Indonesia quite well.

- Environmental Impact Assessment (EIA),
- Strategic Environmental Assessment (KLHS),
- Environmental Audit.
- FPIC
- HC VF, etc

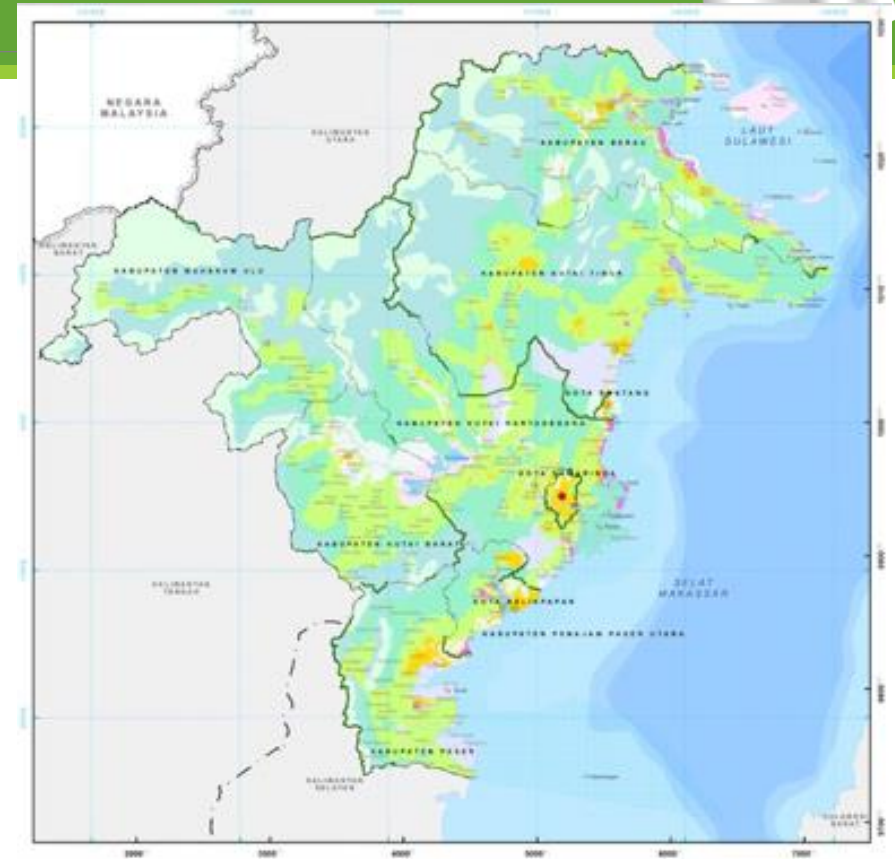


- MoEF has developed a system for providing information on how safeguards are addressed and respected (SIS).
- Necessary actions:
 - Strengthen the implementation of REDD+ safeguards
 - Keeping the system operational (i.e. in managing data-base and web-platform)
 - Creating legal umbrella for full operationalization of the SIS-REDD+, along with other REDD+ architecture's elements

EAST KALIMANTAN: Carbon Fund Pilot Province



- ❑ Kaltim Green is starting point of process of implementation of green development with green governance.
- ❑ EK Medium-term Regional Development Plan and Spatial Plan have integrated green economy and emission reduction program
- ❑ Forest areas managed by 21 Forest Management Unit and 11 FMUs already have Long Term Forest Management Plan.
- ❑ EK has issued a Provincial Regulation for the recognition of indigenous peoples
- ❑ EK is preparing Provincial Regulations on sustainable plantations and Climate Change Master Plan



Geographic Facts: Land: 12,5m ha;
Forest: 6.8m ha; 6,66% of Indonesia

Administrative Facts: Consists of 7
district and 3 cities

GAP ANALYSIS AND WAY FORWARD



GAP ANALYSYS

Feed back and grievance redress mechanism is available, but not specially for the REDD+ purpose.

The existing consultation, participation and outreach processes have not reached all entities across the country. The major challenge is Indonesia being a very large country with high complexity.

Tenure right is a main constraint to support the implementation of land-use regulations.

WAY FOWARD (financed by AF)

Develop a grievance redress mechanism at the sub-national level for REDD+.

Consultation, participation and outreach on the framework of REDD+ strategies and implementations should be conducted in Indonesia's multilayered entities. Priority is given to the sub-national level as a potential site for REDD+ scheme.

Study on tenure right in East Kalimantan and it will be aligned with the policy reform process at national level (One Map Policy, social forestry and agrarian reform)

GAP ANALYSIS AND WAY FORWARD



GAP ANALYSYS

The current role of REDD+ (as part of NDC) is not yet fully understood by stakeholders.

SESA and ESMF document not yet finished

FREL/REL: Different year-bases used for varied scheme requirements.

The NFMS is still highly uncertain.

Lack of synergy among the REDD+ safeguards-related system.

WAY FOWARD (financed by AF)

To start the facilitation process for the positioning of REDD+ in the current commitment of Indonesia's NDC (East Kalimantan).

Finalization of SESA and ESMF documents.

Developing a methodology or approach to synchronize varied year-bases for different purposes will be discussed in East Kalimantan

Developing additional PSP's in East Kalimantan to reduce uncertainty.

Synergy among existing parallel safeguards.

CONCLUDING REMARK



- ❑ As mandate of presidential instruction number 16 of 2015, DG-CC is responsible for coordination and supervision of REDD + activities in Indonesia
- ❑ REDD+ Indonesia embraces the principle of 'national approach with sub-national implementation'
- ❑ With the complex situation in Indonesia, the government must manage the situation well, decent process is very important although it takes time.
- ❑ Post Paris Agreement, REDDs+ becomes an important part of the NDC. The discussion on how to redefine the position of REDD+ in NDC is ongoing. To succeed NDCs, national governments involve the sub-national governments in this discussion.
- ❑ Progress achieved during REDD+ Readiness provides evidences of Indonesia's commitment on REDD+ implementation agenda
- ❑ There are still many works to do and opportunities to collaborate with Indonesia, from the remaining preparation to REDD+ implementation: finance, technology development and transfer, capacity building



THANK YOU